



# MONTHLY MEMBERSHIP PROGRESS REPORT

District 18 O

Results as of: 03/31/2019

GMT: CARLTON LLOYD

LOCATION GEORGIA

GMT CA

| Clubs                 |               |           |               |
|-----------------------|---------------|-----------|---------------|
| RESULTS FOR 2018-2019 |               |           |               |
| QUARTER               | NEW CLUB GOAL | NEW CLUBS | DROPPED CLUBS |
| JULY/AUG/SEPT         | 0             | 0         | 2             |
| OCT/NOV/DEC           | 1             | 0         | 0             |
| JAN/FEB/MAR           | 0             | 0         | 0             |
| APR/MAY/JUNE          | 0             | 0         | 0             |

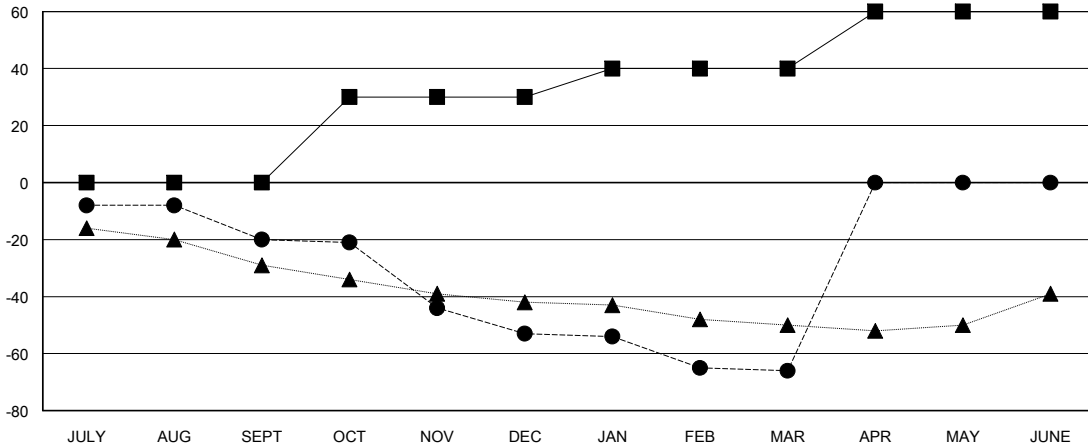
| Members               |                        |                      |  |
|-----------------------|------------------------|----------------------|--|
| RESULTS FOR 2018-2019 |                        |                      |  |
| QUARTER               | MEMBER GROWTH NET GOAL | MEMBER GROWTH ACTUAL | DROPPED MEMBERS ACTUAL (including transfers) |
| JULY/AUG/SEPT         | 0                      | 37                   | 54   |
| OCT/NOV/DEC           | 30                     | 16                   | 46   |
| JAN/FEB/MAR           | 10                     | 18                   | 31   |
| APR/MAY/JUNE          | 20                     | 0                    | 0  |

GOALS AND ACTUAL NEW CLUBS CUMULATIVE



- - CURRENT YEAR GOALS FOR NEW CLUBS
- - CURRENT YEAR ACTUAL NEW CLUBS
- ▲ - LAST YEAR ACTUAL NEW CLUBS

GOALS AND ACTUAL MEMBERS CUMULATIVE



- - MEMBER GROWTH NET GOAL
- - MEMBER GROWTH ACTUAL
- ▲ - LAST YEAR MEMBERSHIP ACTUAL

|                  |
|------------------|
| DROPPED CLUBS: 2 |
|------------------|

24 CLUBS OF 54 ADDED 1 OR MORE NEW MEMBERS

| GENDER DISTRIBUTION                    |              |
|--|--------------|
| MALE                                   | 783 (71.70%) |
| FEMALE                                 | 309 (28.30%) |
| Women Percentage Fiscal Year Goal: 40% |              |

| DROPPED MEMBERS |            |
|-----------------|------------|
| DECEASED        | 19         |
| CLUB CANCELLED  | 11         |
| OTHER           | 101        |
| <b>TOTAL</b>    | <b>131</b> |

[CLICK HERE FOR CUMULATIVE MEMBERSHIP DATA](#)

|                                 |     |
|---------------------------------|-----|
| TOTAL FAMILY UNIT MEMBERS       | 165 |
| FAMILY MEMBERS PAYING HALF DUES | 84  |